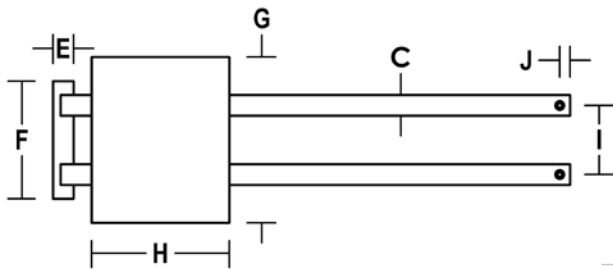
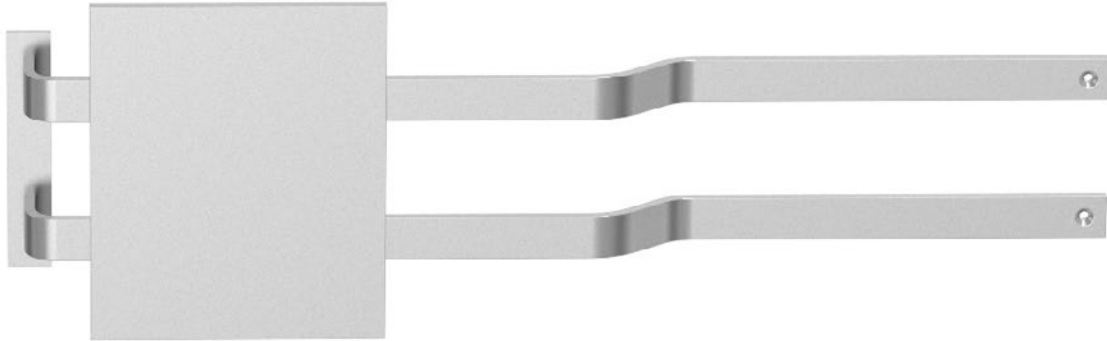
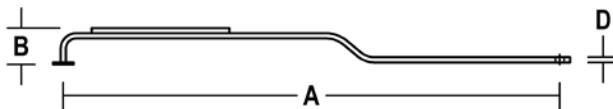


COMMERCIAL DOUBLE PUSH BAR W/ PUSH PLATE

B317



NO.	A	B	C	D	E	F	G	H	I	J
B317	SPECIFY	2.5"	1.5"	0.375"	1.5"	8.5"	12"	10"	5"	0.75"



FINISHES CHART:

NBHA	BHMA	NBHA	BHMA
3	605	20D	624
4	606	26	625
5	609	26D	626
9	611	28	628
10	612	K29	711
10B	613	32	629
10BE	613E	32D	630
14	618	34	
15	619	P	600
19	671	PC	
20L	623		

FEATURED FINISHES: Flat Black (19), Satin Stainless (32D), Antimicrobial (AM)

FINISHES: Standard & Custom Available (See Finishes Chart)

MATERIALS: Aluminum, Brass, Bronze, Stainless Steel

MOUNTING: #2 (Standard Single), #4 (Single Decorative)